



# GLOBE

GLOBAL OBESITY CENTRE

## Group Model Building and Shared Measurement



INSTITUTE FOR HEALTH  
TRANSFORMATION



WHO Collaborating Centre  
for Obesity Prevention



CPHR  
CENTRE FOR POPULATION  
HEALTH RESEARCH



# My background – obesity and... family violence??



INSTITUTE FOR HEALTH  
TRANSFORMATION



**GLOBE**  
GLOBAL OBESITY CENTRE



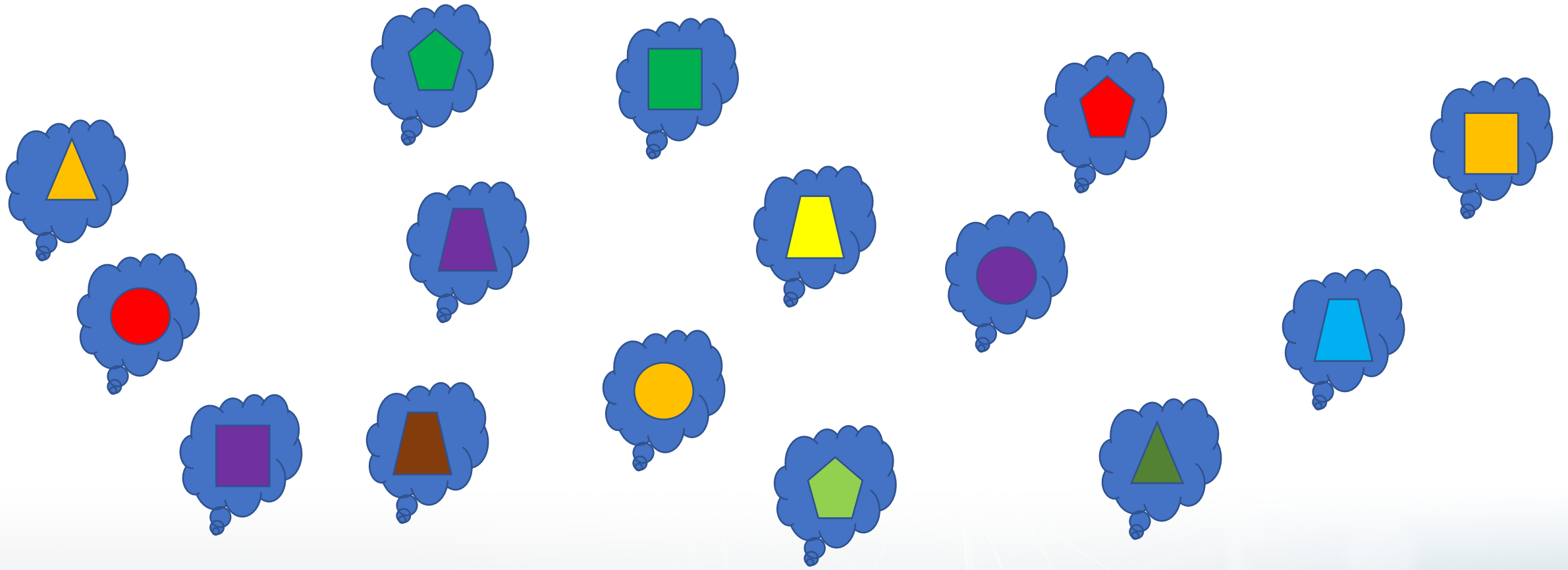
WHO Collaborating Centre  
for Obesity Prevention



**CPHR**  
CENTRE FOR POPULATION  
HEALTH RESEARCH



# Why do Group Model Building?

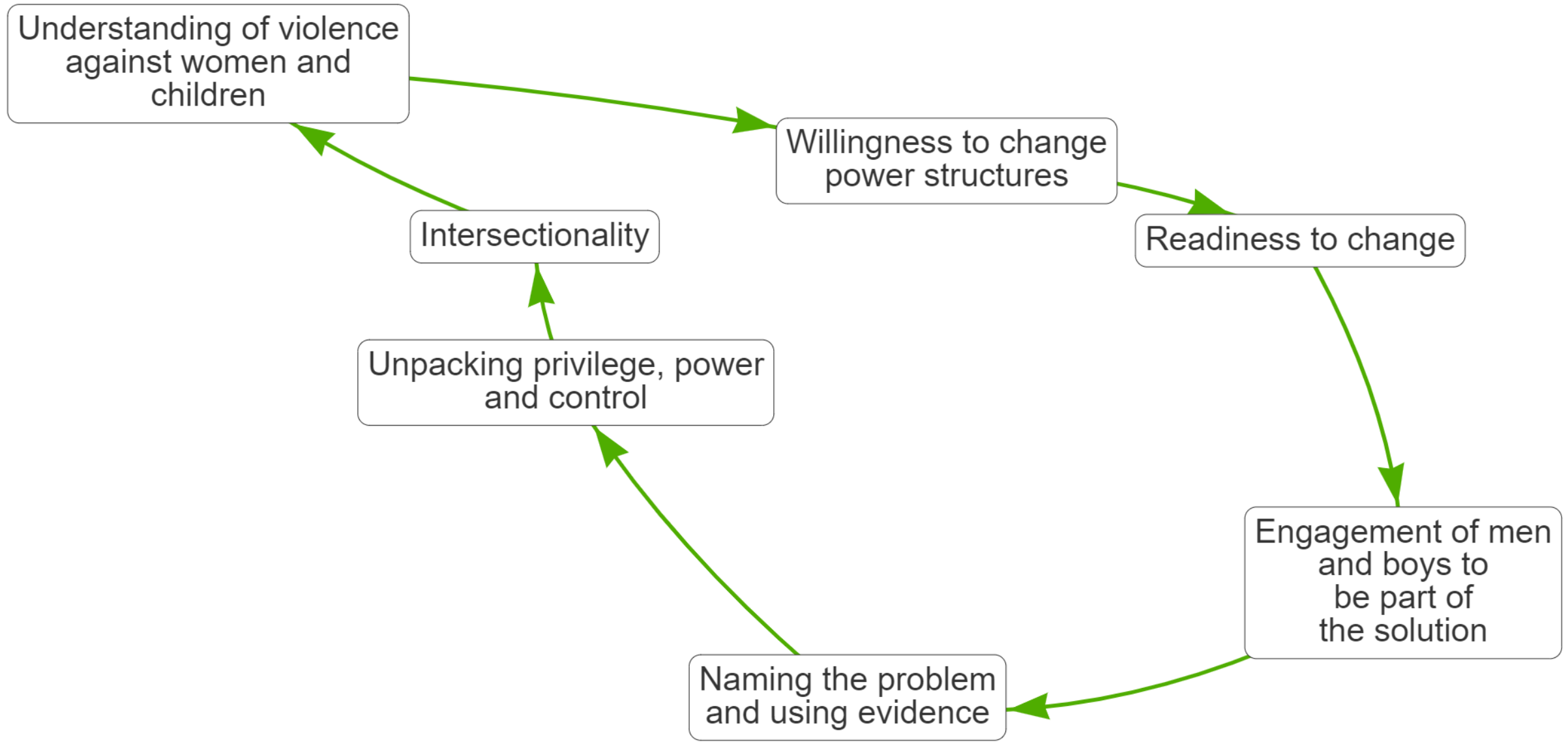


# Why do Group Model Building?

- Build a shared understanding
- Engage new and diverse stakeholders
- Motivate people to identify new, better action

# Stages of a Group Model Building project

1. Establish facilitation team
2. Define your dynamic problem
3. Recruit a diverse group to draw your initial causal loop diagram
4. Generate potential areas to intervene
5. Iterate





# Family violence, language, and group model building

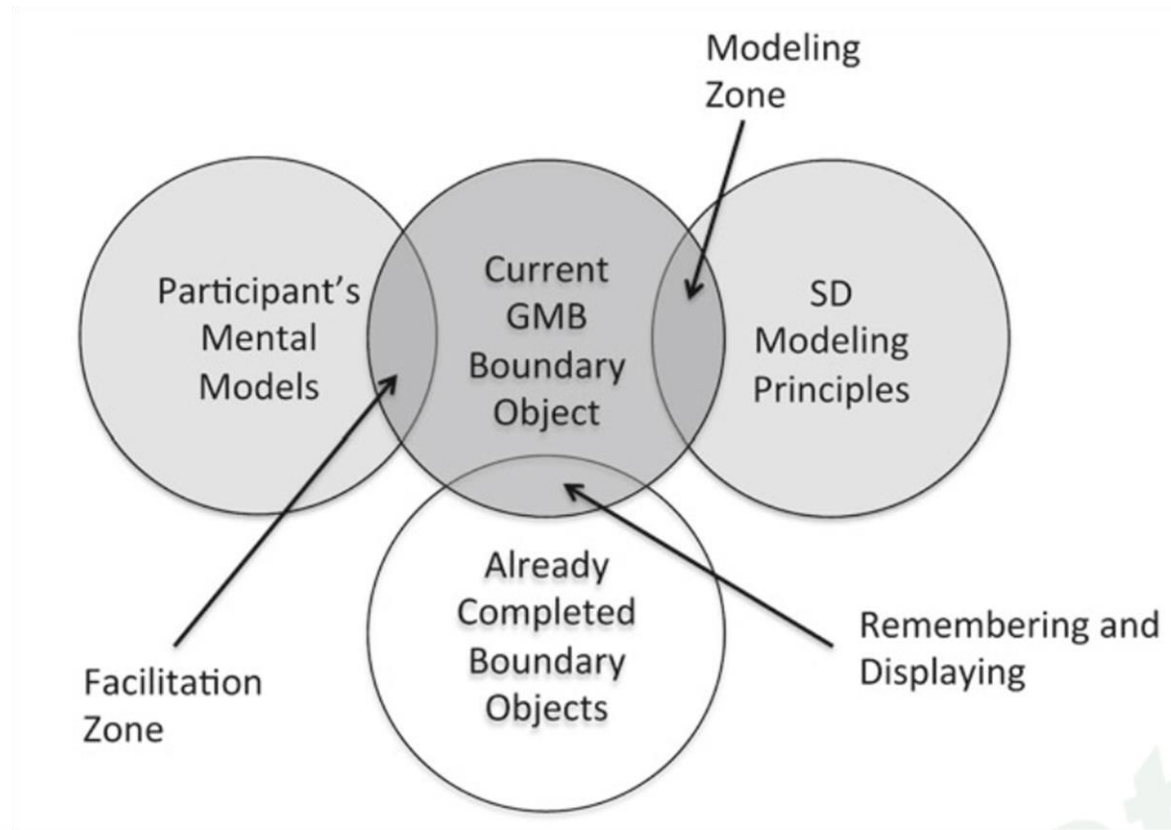
- Family violence, violence against women and children, intimate partner violence, ...
- Resistance, backlash
- Misogyny, gender stereotypes, sexism, gender equity, discrimination, intersectionality, ...
- Causal pathways from gender inequity to family violence

# Group Model Building and Data

- Connection with mind mapping – but distinct
- Rules on naming variables allow for questions about “how to measure?”
- Feedback perspective – distinct from reductionist paradigm (ie, breaking a problem down into many parts)



# Group Model Building Facilitation



- Hovmand, Peter S. 2013. *Community Based System Dynamics*. New York, NY: Springer.

# Group Model Building Facilitation: Boundary Objects

- “A boundary object, most simply, is a representation—perhaps a diagram, sketch, sparse text, or prototype—that helps individuals collaborate effectively across some boundary, often a difference in knowledge, training, or objective” (Black 2013)
- Graphs over Time, Connection Circles, Causal Loop Diagrams

# Group Model Building, Technology, and Community Voice

- Traditional group model building incredibly expert driven
- Community based system dynamics
- STICK-E (Systems Thinking in Community Knowledge Exchange)
- Provides support for the technical side of map building
- “Google Drive” style sharing of maps – iterate over time